



# Hiram Bingham & Andean Explorer Trains

From 2 May 2022 onward every Monday  
until 26 December

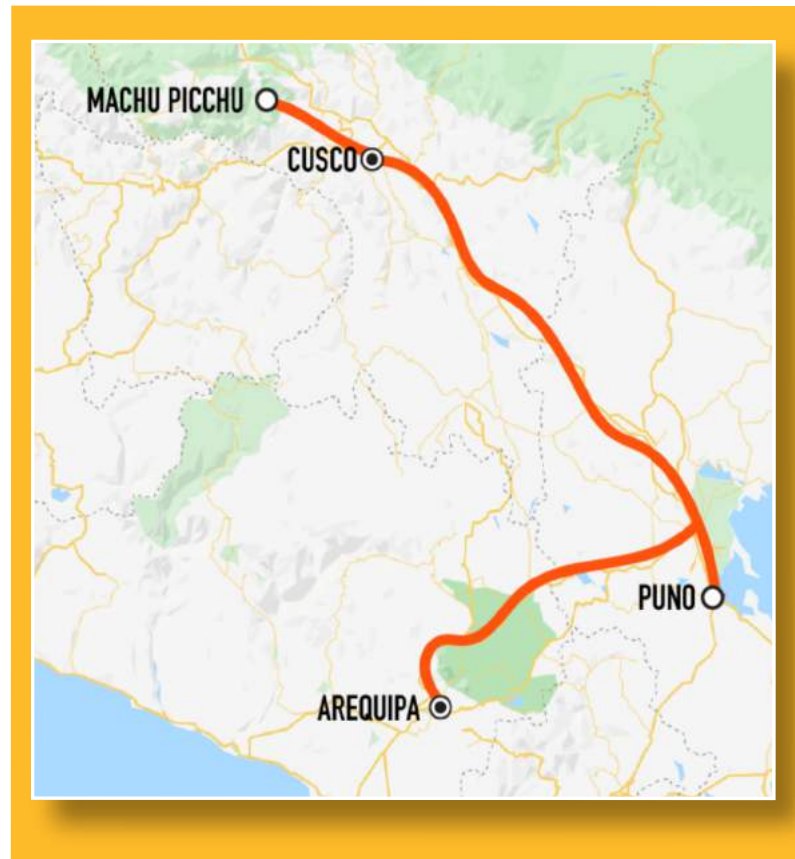


8  
days



# Tour Overview.

Come aboard and experience the best of the best train journeys in South America, an eight-day, seven-night magical journey through spectacular mountainous terrain to Peru's most intriguing Andean traveler destinations, including Cusco, Machu Picchu, Lake Titicaca and Arequipa.



The journey begins in downtown Cusco, from which we travel on the Inca Rail First Class Train to Machu Picchu. This portion of the journey includes ascending zigzags inside Cusco itself as the train gains altitude to reach the station of Poroy. After a private visit to Machu Picchu, we have dinner aboard the luxury Belmond Hiram Bingham train on the return journey to Cusco. We continue the journey on the luxury sleeper train Belmond Andean Explorer, among the most luxurious and spectacular train journeys in the world. The Andean Explorer Train carries us through the mountains to Puno, a town located on the shores of Lake Titicaca, where we visit the Floating Islands of the Uros and the Taquile Islands. The last leg of our journey takes us to Arequipa, Peru's second-largest city. The Andean Explorer Train is the only passenger train that travels the railroad from Puno to Arequipa. In Arequipa, we end our luxury train adventure with a tour of the city. Quite simply, it's the ultimate Peru train adventure! But don't just take our word for it: this Andean train tour is something you need to experience for yourself!



# Important Travel Information.

Bear in mind that high altitude doesn't suit everyone, and the effects of high altitude on the human body can be considerable. Before you register for the tour, consult your medical doctor regarding the impact that a journey over several days at a height between 3500m (11,483 ft) and 3800m (12,467 ft) above sea level may have on your body.

Apart from the high altitude, however, this trip is not particularly physically challenging; an average healthy fitness level is enough to participate. The most challenging element is the visit to the historic citadel of Machu Picchu, which is visited by millions of people of all ages each year and involves numerous ascents and descents on well-marked paths and stairs.



## Our Credo:

**"Rail South America", your South American Rail Expert, spares no expense to make your Tour the premiere experience possible. We will have you tell us what will make your trip the most special for you. If we can meet your needs, we'll do so. If there are additional costs involved, we'll transparently share them with you. We offer you only the finest experience. We guarantee your satisfaction.**

# Tour Prices.



Pricing based on two persons traveling together and sharing a bedroom in Hotels & Train\*\*:

Bunk Cabin	USD \$5'015/person
Twin Cabin	USD \$5'243/person
Suite Cabin	USD \$5'529/person

Pricing based on a single person traveling alone, having bedroom & Train cabin alone\*\*:

Bunk Cabin	USD \$7'815/person
Twin Cabin	USD \$8'215/person
Suite Cabin	USD \$8'715/person

\*\* Rates do not apply to the following holidays: Holy Week, Inti Raymi (the week of June 24), Independence Day celebrations (Week of July 28 and 29), November 1, Christmas and New Years (December 23 – 31 and January 1), and any long weekend that these holidays may generate.

## Included:

- ✓ All services mentioned in the program, accommodations, meals, entrance fees, train tickets, and taxes. All services are private except the trains, the transfers to the citadel of Machu Picchu and the boat ride on Lake Titicaca.
- ✓ English-speaking local guides
- ✓ 1 piece of luggage up to 15 kg (33 lb) per person

## Not Included:

- ✗ International flight tickets to Cusco, Peru and out of Arequipa, Peru.
- ✗ Meals not mentioned in the itinerary and drinks for ALL meals.
- ✗ Travel, health and accident insurance
- ✗ Tips for local guides and driver



# Day by Day Itinerary

☕ Breakfast   🍽️ Lunch   🍴 Dinner

We recommend making this journey between May and December during the dry season. During the rainy season, from January to April, there are no trains departing from Cusco because the IncaRail passage over the Zigzags cannot be made. Therefore, the trip from Cusco to Ollantaytambo or Urubamba must be made by bus, and the Hiram Bingham journey is much shorter.

## Day 1

### Monday Arrival in Cusco, Peru

You will arrive on your flight to Cusco, Peru, and check in to your hotel in Cusco. The rest of the day, you'll have free time.



## Day 2

### Tuesday Cusco & Surroundings

After breakfast, we will embark on a private city tour of Cusco, including a visit to the surrounding Inca ruins. The tour begins at the Koricancha, an ancient Inca Palace and the principal center of sun worship. Later, we'll visit the "Plaza de Armas" with its famous cathedral, the beautiful church of "La Compañía de Jesús," as well as other colonial buildings. The tour then leaves the city for a visit to "Sacsayhuaman," an imposing military monument and particularly fine example of Inca architecture. Further away, we'll also view the archaeological site of Quenko, the complex of Puca-Pucara, and Tambomachay, which was known as the "Baths of the Incas." Before returning to Cusco, we'll visit a local artisan workshop to learn how to distinguish llama, alpaca, guanaco, and vicuña wool. We will stay overnight at the hotel in Cusco.

☕ 🍽️

## Day 3

### Wednesday Machu Picchu

This morning we'll experience the thrilling four-hour trip on the IncaRail First Class Train from Cusco's San Pedro Station to the historic Incan site of Machu Picchu, enjoying lunch on the train. The IncaRail train journey is extraordinary for rail enthusiasts because the train climbs from Cusco's San Pedro Station to Poroy, carrying out a series of zigzags inside the city of Cusco. At Machu Picchu, we'll explore the famous Lost City of the Incas, led by a private expert guide. That evening, we'll depart from the railway station in Aguas Calientes aboard the "Belmond Hiram Bingham Train" to Poroy. During the journey, we'll have dinner on board the train. From Poroy, we'll return to Cusco on our private vehicle and spend the night in Cusco.



## Day 4

### Thursday Andean Explorer Train, Cusco - Puno

You will be picked up mid-morning and driven to the Wanchaq Railway Station in Cusco, where we'll board the luxury Andean Explorer Train. As soon as the train departs, staff members serve a cocktail followed by lunch in the train's dining car. That afternoon, we'll visit the archaeological site of Raqchi, where we'll view the remains of the Viracocha Incan Temple featuring large clay walls resting on Tiwanaku foundations. There are also storage buildings and aqueducts from Incan times. When the sun sets, the train will reach La Raya Pass at an altitude of 4,319 m (14,170 ft). La Raya is the highest point of the rail journey to Puno and offers magnificent Andean vistas complete with snow-capped mountains. When night falls, the lounge car is the perfect place to get some refreshing drinks and sit back to contemplate the day. We will have dinner in the dining car during the descent to Lake Titicaca. Although the train reaches Puno before midnight, we will spend the night on board the train.





**Day 5**

Friday

## **Andean Explorer Train, Lake Titicaca**

We'll have breakfast on the train. Then, at about 8:30 AM, we'll board a boat that will carry us to the floating Islands of the Uros, where we'll visit houses made out of layers of 'totora' reeds. After a short ride in one of the traditional reed boats, we will head to Taquile Island, the weavers' island. On this mountainous island, there are no roads or cars, so everyone must walk to get around. Over the centuries, 'Taquilenos' have preserved many of their traditions, such as a communitarian life where everything is shared. Men always seem to be walking around the island, knitting the woolen caps they wear. We'll have lunch at a private beach on the Island. After a performance featuring a traditional dance and a weaving demonstration, we'll head back to Puno station, where the staff serves tea and biscuits to visitors. We'll return to the train for dinner as we continue on to Arequipa. We will stay overnight at Saracocha Station.



**Day 6**

Saturday

## **Andean Explorer Train, Saracocha - Arequipa**

We will have breakfast on board the train and continue the journey to Arequipa. The views from the train include the extraordinary lagoon of Lagunillas at 4,450 m (14,600 ft) where, depending on the season, we may spot Andean flamingos in the distance. In the morning, the train stops to visit Sumbay Caves, where the Peruvian highlands' first humans created rock art. We'll enjoy a farewell lunch before reaching the city of Arequipa, then transfer to our hotel in Arequipa.





**Day 7**

## Sunday **City Tour in Arequipa**

We will pick you up at the hotel for a half-day city tour of Arequipa. Our guide will show us the St. Lazarus quarter where Arequipa was founded. We'll walk down lovely streets lined with flowers and historic homes. At the Carmen Alto viewpoint, we'll stop for views of the surrounding farmland, spectacularly framed by the Pichu Pichu, Cachani and Misti volcanoes. We'll visit the Andalusian-style church and buildings in the Yanahuara colonial district and the Monastery of St. Catherine, a Dominican religious site. We'll also explore the Basilica Cathedral of Arequipa in the Plaza de Armas, dating from the 16th century, and explore the history of the Church of the Society of Jesus (Iglesia de los Jesuitas). Before lunch, we'll return to the hotel. The rest of the day you will have free time.



**Day 8**

## Monday **Departure**

You will be transported to the airport for your departure flight.





## Tour Considerations / Pre- and Post-Tour Extensions

This tour is for individual travelers; therefore, we can adapt the tour to accommodate your specific requests. Ask about our tour extensions to the Galapagos Islands, Easter Islands, or the Amazon Rainforest.

For railfans: On specific dates, we can add the breathtaking Lima-Huancayo train to this tour program. Inquire with us about possible travel dates and availabilities.

# Hotel Accommodation.



### **Novotel, Cusco**

Located in a 16th-century building in Cusco, Novotel Cusco offers modern rooms with heating and cable TV. It is only three blocks from Plaza De Armas and the cathedral. All of the rooms in Cusco Novotel are equipped with a mini-bar, a work desk, and a private bathroom.



### **Hotel Casa Andina Premium, Arequipa**

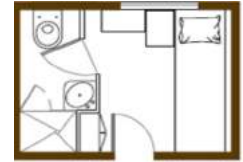
The Hotel Casa Andina in Arequipa is located in the historical section of Arequipa, opposite the Santa Catalina Monastery and in walking distance of the cathedral and Plaza de Armas. The hotel has an excellent restaurant, and a bar. The rooms feature a safe, minibar, Wi-Fi, AC, TV, and all modern amenities.

# Train Accommodation.

## Bunk bed Cabin



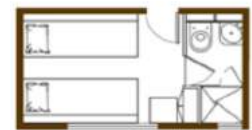
- Smaller en-suite cabins with a bunk bed with day and night configuration
- 2 single beds (upper and lower berth) in night position
- 1 banquette in day position
- Wardrobe
- Shower, washbasin, WC
- 110v/220v shaver socket outlet
- Total area of each compartment: 5.5 m<sup>2</sup>



## Twin bed Cabin



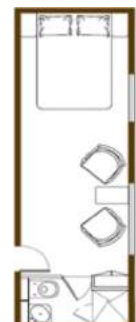
- En-suite cabins with day and night configuration, all lower level
- 2 single beds, side by side in night position
- 1 banquette and 1 seat in night position
- Wardrobe
- Shower, washbasin, WC
- 110v/220v shaver socket outlet
- Total area of each compartment: 7.4 m<sup>2</sup>



## Suite Cabin



- En-suite cabins with double bed
- Sitting area (2 seats)
- Wardrobe
- Private bathroom with a washbasin, shower and toilet
- Mirror in front of the washbasin
- Coat rack
- 110v/220v shaver socket outlet
- Total area of each compartment: 13.1 m<sup>2</sup>





# Ready to Book?

If so, please use the "RESERVE MY SEAT" button to enter your personal information. We will then contact you to discuss further details of the trip and how to proceed with registration.



## Questions?

Give me a call!

**+593 981 312 458**

